

# Theatre Passe Muraille

16 RYERSON AVE TORONTO, ONTARIO M5T 2P3 P 416.504.7529 F 416.504.8980 E INFO@PASSEMURAILLE.ON.CA W PASSEMURAILLE.CA

Andy McKim ARTISTIC DIRECTOR | Régine Cadet GENERAL MANAGER

## TPM

---

### Address & Telephone

#### **Mainspace and Backspace Theatres:**

16 Ryerson Avenue  
Toronto, Ontario  
M5T 2P3

Phone: 416.504.7529

Fax 416.504.8980

#### **Office and Rehearsal Hall:** (just around the corner)

54 Wolseley St,  
Toronto, Ontario  
M5T 1A5

Phone: 416.504.8988

Fax: 416.504.8980

### Rental Procedure

Please note that Theatre Passe Muraille works based on a full production design style, rather than Road House style.

This means that when you rent the space, you start with the lighting and masking in storage. It is expected that you / your designers will provide us with your lighting design / stage design in advance, and on the FIRST day of your rental dates, the lighting design / stage design will be installed.

To rent the space, please fill out the form at:

<http://passemuraille.ca/archives/rentals/backspace>

Once the conversation about rental dates starts, we will send you a simple budget form and tech questionnaire to fill out and return before the rental can be confirmed

# Theatre Passe Muraille

16 RYERSON AVE TORONTO, ONTARIO M5T 2P3 P 416.504.7529 F 416.504.8980 E INFO@PASSEMURAILLE.ON.CA W PASSEMURAILLE.CA

Andy McKim ARTISTIC DIRECTOR | Régine Cadet GENERAL MANAGER

## What your Rental Includes

The contract goes into great detail, but essentially your rental fee for each week *includes:*

- 40 hours of our house technician time,
- all FOH & Box Office staff and costs if you stay within TPM's regular performance schedule: Wed-Sun @ 7:30pm & a Saturday, and Sunday Matinee @ 2:00 p.m.
- Web, phone & in person sale of your tickets.

### *What is not included:*

- Load in/Lighting Hang/Strike labour fees for the technicians beyond the house tech
- Insurance (we can provide you with forms to apply for 3<sup>rd</sup> party insurance through our insurer, or you can find another company)
- Any house technician time over the 40 hours included
- Any FOH / Box Office staffing charges for bringing in staff for performances outside of TPM's schedule.
- (Note: we do not have a house lighting plot ready for rental use – this must be accommodated for in design and in hang/focus time by the rental company)

In terms of lighting, it is important to note that your rental does not come with lights in the air ready to be focused and set. There are no stage lights plugged in or hung at the beginning of a rental and we hang the lights specific to each company's design plot. If you want to hire a designer to prep, plan, and draft a lighting plot, which we will hire crew to hang on your behalf, we are happy to do so, and this is the most common model.

If you don't want to hire a designer, you can pay a \$150 fee to the designer of a pre-designed generic plot that does work well in our space. NOTE: you still need to use the time to, and pay the labour for, the hanging, focusing, and building of cues with that pre-designed plot. Anything that is up before your rental, is brought down at the end of that previous rental.

### *For Festival shows:*

Please note that festival shows (ie Fringe / Summerworks etc) often do not have full access to the equipment, as the rentals don't encompass all the equipment. Please go through your festival to find out what is included for your show.

## Rentals Coordinators

Jason Golinsky – Production & Facility Manager ext: 2138

Jenn Sartort – Producer ext: 2133

# Theatre Passe Muraille

16 RYERSON AVE TORONTO, ONTARIO M5T 2P3 P 416.504.7529 F 416.504.8980 E INFO@PASSEMURAILLE.ON.CA W PASSEMURAILLE.CA

Andy McKim ARTISTIC DIRECTOR | Régine Cadet GENERAL MANAGER

## Backspace

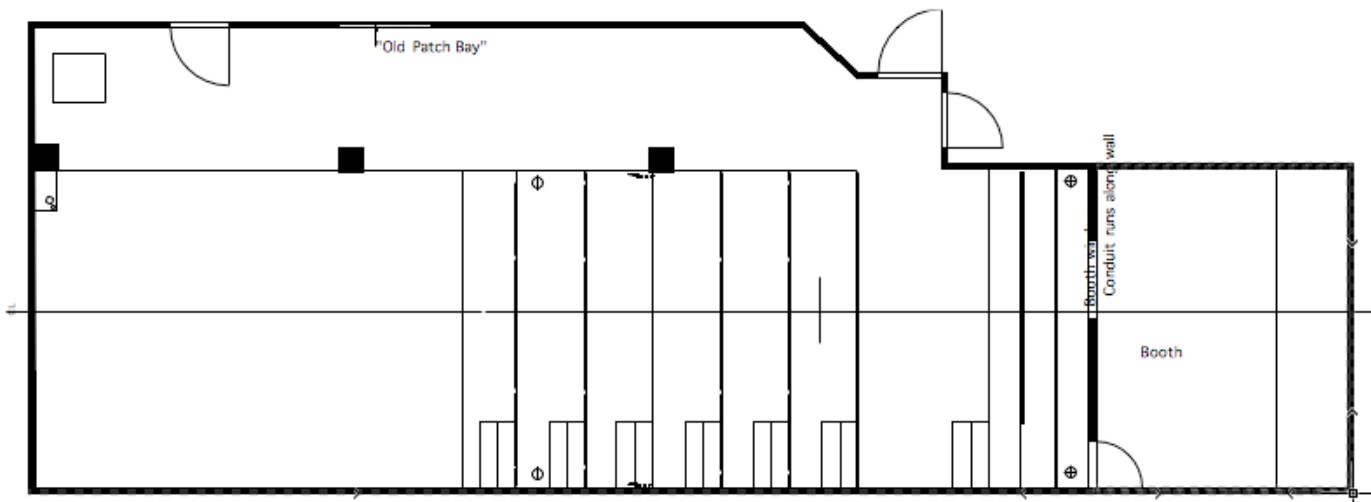
### Capacity

The majority of the seating is on bench risers with upholstered backs.

**55 Persons** – with nonfixed seating in the accessible seating area

**53 Persons**– with a mobility device in the accessible seating.

### Deck



### Dimensions

Depth – 19'2"

Width – 14'8" (14'4" between pillars)

Stage Lip back of house – (Horizontal measurement) 26'

Deck Height – 1'5"

Clearance under Balcony/Mezzanine SL – Varies. 5'9" to 5'11" at stage edge. 7' in front aisle

Grid Height

SL/SR Pipes – 14'4"-14'6"

US/DS pipes – 14'3"-14'5"

NOTE: that while there are levels to step off the SL side of the stage, they are NOT standard steps, and are uneven.

# Theatre Passe Muraille

---

16 RYERSON AVE TORONTO, ONTARIO M5T 2P3 P 416.504.7529 F 416.504.8980 E INFO@PASSEMURAILLE.ON.CA W PASSEMURAILLE.CA

---

Andy McKim ARTISTIC DIRECTOR | Régine Cadet GENERAL MANAGER

## Related equipment

N/A

## Masking (please confirm in advance)

4 – 8'x4' wide panel – Webbed and Grommetted top, pocketed bottom

1 – 10'10"hx6'6"w panel – webbed and grommetted top, pocketed bottom

1 – 23'x12'w panel – webbed & grommetted top, grommetted sides, pocketed bottom  
(often used on its side to mask off the US portions of the balcony SL.

---

## Shared Inventory Note:

With all shared inventory, please check for availability in advance. Note there may be an additional cost for shared inventory.

## Lighting

### Control System

ETC Express 125

### Console Accessories

None

### Circuits

New Style Twist home runs spread upstage to DS along the SL balcony.

### Dimming

48 dimmer ETC Sensor rack @ 1.2K

1 dimmer reserved for House Lights

### Aux / Tie in Power

None

# Theatre Passe Muraille

---

16 RYERSON AVE TORONTO, ONTARIO M5T 2P3 P 416.504.7529 F 416.504.8980 E INFO@PASSEMURAILLE.ON.CA W PASSEMURAILLE.CA

---

Andy McKim ARTISTIC DIRECTOR | Régine Cadet GENERAL MANAGER

## Instrument Inventory

36 - ETC S4 ERS @ 575w

- 4 x 19 deg barrels
- 10 x 26 deg barrels
- 18 x 36 deg barrels
- 4 x 50 deg barrels
- 0 x 90 deg barrels

12 - Strand SL 23/50 @575w

### *Fresnels, Par Can / Flood*

16 - Strand 6" Fresnel @ 1K, 14-68 deg

18 - Altman 6" Fresnel @ 500w, 16-70 deg

8 - Par 64, 1KW, WFL, other bulbs may be available.

1 - Strand Iris 3 Cyc Light @ 1K

### *SHARED Lighting Accessories – Check on availability*

?? – 7.5" Barn Doors

?? – Barn Doors with short Snoot.

?? – 10" Barn Doors

6 – Source 4 Iris (Shared Inventory)

### *Automation (Extra cost for use, Shared inventory)*

2 - Rosco I-Cue moving Mirror

4 - Seachanger Tungsten for Source 4

# Theatre Passe Muraille

---

16 RYERSON AVE TORONTO, ONTARIO M5T 2P3 P 416.504.7529 F 416.504.8980 E INFO@PASSEMURAILLE.ON.CA W PASSEMURAILLE.CA

---

Andy McKim ARTISTIC DIRECTOR | Régine Cadet GENERAL MANAGER

## Sound

### Consoles

Insert here

### Console Accessories

None

### Routing

None

### Playback

Qlab3 (Check for availability and cost)

Dual Deck Numark CDN25+G CD Player with Remote

1/8" Jack for Laptop, MP3 player etc

Sony Minidisc Deck MDS – JE510 (shared inventory, not confirmed in working order)

### Microphones

See Shared inventory document

### Speakers

2 x Yorkville Pulse TL12 (Our standard mains)

1 x Yorkville YSL Elite 12" 700W powered sub ????

2 x 8" Yorkville monitors. Model TBA (shared inventory)

### Amplifiers

Ashly MOS FET 1200w 2000M x2

### Snake

none

### Aux Equipment (shared inventory)

Yamaha SPX 900 multi-effect processor

### Direct Boxes (shared inventory)

2 x mono Active DI boxes

---

# Theatre Passe Muraille

---

16 RYERSON AVE TORONTO, ONTARIO M5T 2P3 P 416.504.7529 F 416.504.8980 E INFO@PASSEMURAILLE.ON.CA W PASSEMURAILLE.CA

---

Andy McKim ARTISTIC DIRECTOR | Régine Cadet GENERAL MANAGER

## Communications and Projections

### Intercom

Single channel use.  
2 headsets and beltpacks.

### Projector (Extra cost for use, shared inventory)

Panasonic PT-DZ530U

## Shop, Rehearsal & Loading

### Cabaret stage

A bar and Cabaret space are potentially available for events during your run. Please see our website for details.

### Shop

Shop space (no spray booth available) is available for a reasonable \$100/day rate + fasteners. If you wish to use your own carpenter, please contact us in advance. We reserve the right to insist upon the use of one of our carpenters. (\$20/hr)

Please see our website for more details.

### Rehearsal

A small rehearsal space (not suitable for public performances) is available for rent around the corner at 54 Wolesely.

### Loading

Loading is through a double door off/upstage left. Loading is done into the SL wing. Note the SL wing is a fire exit.

---